

PRODUCT LINE CARD

WEIMERBEARING.COM

ABOUT US

Specializing in high-tech electrical motion control, mechanical power transmission and fluid control products, Weimer Bearing & Transmission offers in-house engineering support, complete machining and fabrication services, as well as product repair and custom tailored inventory solutions. Weimer is now positioned as one of the largest independent, privately held, family owned businesses of its kind, spanning four generations. Weimer has steadily added new and innovative products to its offering, while heavily investing in highly skilled employees and state-of-the-art equipment. The company has expanded its geographical reach to seven states, allowing Weimer to better serve the Midwest marketplace.

“The future is bright for Weimer Bearing & Transmission. We will continue to grow and adapt with the changing needs of our customer base. We are firmly committed to excellence and professionalism in all facets of our business. Our growth and expansion plans are unlimited, and we intend to continue our mission of being the finest in our industry.”

– Richard Stangl, CEO (1980-2014)



THE WEIMER DIFFERENCE

- PRIVATELY HELD
- ONE OF THE NATION'S LARGEST INDEPENDENT SUPPLIERS
- 20+ STOCKING LOCATIONS IN SEVEN STATES
- ISO 9001:2015 CERTIFIED
- FOUNDING MEMBER OF IDC-USA (INDEPENDENT DISTRIBUTORS COOPERATIVE)
- CURRENT MEMBER OF AFFILIATED DISTRIBUTORS (AD) – OVER 80 MEMBERS AND 300 LOCATIONS NATIONALLY
- 24-HOUR EMERGENCY SERVICE AND SATURDAY HOURS
- FULL SERVICE IN-HOUSE ENGINEERING, MACHINING AND FABRICATION SERVICES
- SUPPLIER OF OVER 200 INDUSTRIAL MANUFACTURERS



IN-HOUSE ENGINEERING SUPPORT

CAD capabilities, computerized drive design, 3D printing, on staff engineers



CUSTOMIZED INVENTORY SOLUTIONS

VMI, kitting, global sourcing, tailored stocking programs, custom packaging and BOM assemblies



MACHINING AND FABRICATION

Quick turn around, in-house customization, full service machining and modification of standard components

OUR HISTORY

1926

H.W. Weimer Company was founded in 1926 by engineer and inventor Hugo Weimer. The company began as an engineering and design firm, and Mr. Weimer was instrumental in the invention of the v-belt drive system.



1938

Due to the local demand for power transmission products, Mr. Weimer expanded his engineering company into the distribution and manufacturing of power transmission components for industrial customers throughout the greater Milwaukee area.



1980

In 1980, Dick Stangl took over as President and owner, changing the name of the company to Weimer Bearing & Transmission - better reflecting the growing focus on the supply of power transmission products and bearings. During this time, the company experienced a great period of growth, moving to a new facility in the northwest Milwaukee area.



2016

Under the leadership of Frank Stangl, Weimer Bearing & Transmission moved its headquarters to Germantown, Wisconsin, allowing for further growth and expansion. The company opened its 20th location and now operates in seven states. In addition to its core product offering, Weimer has added a number of high-tech motion control products, full belt fabrication services, as well as a complete offering of pneumatics and hydraulics.



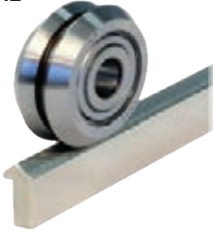
PRODUCTS

BEARINGS

- ANGULAR CONTACT
- BABBITT
- BALL
- BRONZE
- CAM FOLLOWERS
- CERAMIC
- CORROSION RESISTANT
- CYLINDRICAL
- FLANGE
- FOOD GRADE
- GLASS
- GRAPHITE



- HIGH TEMPERATURE
- JOURNAL
- LINEAR
- MACHINE TOOL
- MINIATURE
- NEEDLE
- PILLOW BLOCK
- POLYMER
- PRECISION
- ROD END
- SNW KITS
- SHAFTING



- SLEWING RINGS
- SPECIALTY
- SPHERICAL
- SPLIT HOUSING
- STAINLESS STEEL
- TAKE - UP
- TAPERED
- TEFLON
- THERMOPLASTIC
- THRUST
- UNGROUND
- WOOD



MECHANICAL POWER TRANSMISSION

- ACTUATORS
- BALL SCREWS
- BALL SPLINES
- BELTS
- BUSHINGS
- BRAKES
- CHAIN
- CLUTCHES



- COUPLINGS
- GEARS
- GEAR MOTORS
- GEAR REDUCERS
- HTD DRIVES
- IDLERS
- LEAD SCREWS
- PULLEYS



- ROLLER SCREWS
- SERVO GEARHEADS
- SPROCKETS
- TORQUE LIMITERS
- TENSIONERS
- UNIVERSAL JOINTS
- VARIABLE SPEED DRIVES



SPECIALTY PRODUCTS

- ADHESIVES
- ALUMINUM FRAMING
- BATTERIES
- BEARING ISOLATORS
- BEARING LUBRICATORS
- BEARING PULLERS
- CASTERS
- CABLE CARRIERS
- CABLE CYLINDERS
- CHAIN BREAKERS
- FOOD GRADE PRODUCTS



- GAS SPRINGS
- HAND TOOLS
- KEYSTOCK
- KNOBS AND HANDLES
- LASER ALIGNMENT TOOLS
- LEVELING PADS
- LOAD CELLS
- MAINTENANCE TOOLS
- MANIFOLDS
- METRIC COMPONENTS



- O - RINGS
- OIL SEALS
- PROTECTIVE BELLOWS
- RETAINING RINGS
- SHAFT COLLARS
- SHIMS
- SORBENT AND SPILL CONTROL PRODUCTS
- SPINDLES
- WAY COVERS
- WEAR STRIPS



MATERIAL HANDLING

- AUGERS
- BELT CLEANERS
- BUCKET ELEVATORS
- BUCKETS
- CHAIN
- CONVEYOR BELTING



- CONVEYORS
- DRAG CONVEYORS
- FLAT WIRE BELTING
- HEAD / TAIL PULLEYS
- PLASTIC MODULAR BELTING
- ROLLERS



- SCREW CONVEYORS
- TABLE TOP CHAIN
- TAKE-UP UNITS
- WASTE WATER TREATMENT
- WEAR STRIPS
- WIRE MESH BELTING



ELECTRICAL

- AC/DC MOTORS
- AC INVERTERS
- BRAKES
- CLUTCHES
- DC CONTROLS
- DEFINITE PURPOSE CONTROLS
- FRACTIONAL HP MOTORS
- EXPLOSION PROOF MOTORS
- ENCODERS
- LIGHT CURTAINS



- LINEAR MOTION CONTROL
- MOTOR CONTROL CENTERS
- MOTOR STARTERS
- PILOT DEVICES
- PREMIUM EFFICIENCY MOTORS
- PROGRAMMABLE CONTROLLERS
- RELAYS
- ROBOTICS



- SAFETY SWITCHES
- SENSORS
- SERVO MOTORS AND CONTROLS
- STEPPER MOTORS AND DRIVES
- TORQUE CONTROL DEVICES
- VECTOR DRIVES



FLUID POWER

- AIR PREPARATION
- AUTOMATIC VALVES
- CONTROL VALVES
- CYLINDERS
- FILTERS
- FRL'S



- HOSE AND FITTINGS
- HYDRAULIC CYLINDERS
- MANUAL VALVES
- PANCAKE CYLINDERS
- PNEUMATIC CYLINDERS
- POWER SUPPLIES



- RODLESS CYLINDERS
- ROTARY UNIONS
- SUCTION CUPS
- TIE ROD CYLINDERS
- VACUUM MAINTENANCE
- VACUUM PUMPS

CUSTOMIZED INDUSTRIAL SERVICES

- AFTER HOURS EMERGENCY SERVICE
- CUSTOM BAR CODING
- CAD CAPABILITIES
- COMPUTERIZED DRIVE DESIGN
- DOCUMENTED COST SAVINGS
- ELECTRONIC DATA INTERCHANGE (EDI)



- ENGINEERING ASSISTANCE
- FULL SERVICE, IN-HOUSE MACHINING
- KANBAN
- KITTING
- MAINTENANCE SEMINARS
- PRIVATE LABELING
- PUNCH OUT CATALOGS

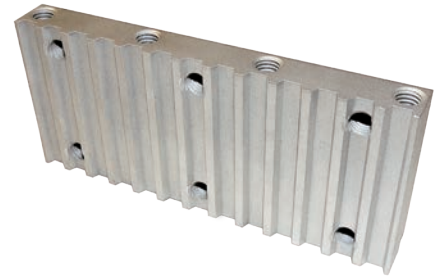


- THIRD PARTY LOGISTICS (3PL)
- VALUE ADDED DOCUMENTATION
- VENDOR MANAGED INVENTORY (VMI)
- 3D PRINTING
- NATIONAL MRO CONTRACTS

FULL SERVICE MACHINING FACILITY

CAPABILITIES

REBORES
BROACHING
KEYWAYS
DRILL AND TAP
BOLT PATTERNS
METRICS
IDLERS
COUNTER BORES
CUT, MILL, DRILL CLASS L SHAFTING
MODIFIED PT COMPONENTS



COMPONENTS



FINISHED PRODUCT

ASSEMBLIES

- BOM PARTS ASSEMBLIES
- CUSTOMIZED PARTS KITS
- PRIVATE LABELING
- SPECIAL PACKAGING



COMPONENTS



FINISHED PRODUCT



BEFORE

WAY COVER REPAIR

- COMPLETE REPAIR OR REPLACEMENT
- REVERSE ENGINEERED OEM COVERS
- FULL DENT REMOVAL, BOX AND WIPER REPLACEMENT, AND CYCLE TESTING
- SPECIAL 24-HOUR DELIVERY SERVICE AVAILABLE



AFTER



BEFORE

BALL SCREW REPAIR

- COMPLETE INSPECTION AND REPAIR OF BALL, ACME AND LEAD SCREW ASSEMBLIES
- REBUILD INCLUDES CLEAN, INSPECT, REGRIND, REBALL AND STRAIGHTEN
- REVERSE ENGINEERING CAPABILITIES
- EMERGENCY RUSH SERVICE



AFTER



BEFORE

GEARBOX REPAIR

- ALL MAJOR GEARBOX BRANDS
- REPAIR OR COMPLETE REBUILD
- ALL REPAIRS INSPECTED, TESTED AND WARRANTIED
- PRIORITY GEARBOX REPAIR SERVICE



AFTER



SLIDE

SLIDE, SPINDLE, & ELECTRICAL REPAIR



SPINDLE



ELECTRICAL

MECHANICAL POWER TRANSMISSION MANUFACTURERS



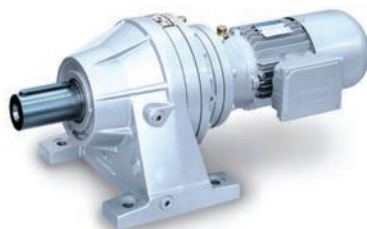
- ACCURATE GEAR
- ACME CHAIN
- ACSI CONVEYOR
- ALLIED LOCKE
- ALLING LANDER
- ALTRA
- AMMEGA
- AMERICAN PULLEY
- AMETRIC
- AMMERAAL BELTECH
- ANDANTEX
- ATRA-FLEX
- AUTOGARD
- BANDO
- BELDEN
- BENZLERS
- BISON GEAR
- B-LOC
- BONFIGLIOLI
- BOSTON GEAR
- BRAD FOOTE
- BRECOFLEX
- BREVINI
- BREWER MACHINE
- BROTHER INTERNATIONAL
- BRYANT
- CANDY CONTROLS
- CARLISLE
- CCI
- CHANTLAND PULLEY
- CLEVELAND GEAR
- CLIMAX COLLARS
- CONE DRIVE
- CONTINENTAL/CRP
- CONVEYOR COMPONENT SYSTEMS
- CURTIS MACHINE
- DAIDO
- DALTON GEAR
- DANAHER
- DAVID BROWN
- DAYCO
- DAYTON SUPERIOR
- DIAMOND CHAIN
- DICHTOMATIK
- DIEQUA
- DODGE/MASKA
- DORRIS
- DOUGLAS MANUFACTURING
- DRIVES INC.
- DUFF-NORTON
- DYNA-VEYOR
- DYNACORP
- EAGLE BELTING
- EFSON
- ELECTRA-GEAR
- EURODRIVE-SEW
- EXLAR
- FENNER DRIVES
- FOOTE-JONES
- FORMSPRAG
- GATES MECTROL
- G & G MANUFACTURING
- GERBING
- G.L. HUYETT
- GOODYEAR EAGLE
- GRANT GEAR
- GREAT LAKES INDUSTRIES
- GROVE GEAR
- GUARDIAN
- HABASIT / KVP
- HELICAL
- HERCULES GEAR
- HI-LO PULLEY
- HILLIARD
- HITACHI
- HORTON
- HUB CITY
- HUCO DYNATORK
- IDC-USA
- IGUS LINEAR
- INA LINEAR
- INTERROLL
- JASON
- JEFFREY / WHITNEY
- JERVIS WEBB
- JM CLIPPER
- JOYCE
- KTR
- KWS
- LEE CONTROLS
- LENZE
- LINN GEAR
- LOVEJOY
- MACH III
- MARTIN SPROCKET & GEAR
- MASKA
- MASTERDRIVE
- MAUREY
- MICRON
- MISUMI

- MOTOVARIO
- NATIONAL
- NB LINEAR
- NEXEN
- NOLU
- NOOK
- NORD GEAR
- NORTH AMERICAN PULLEY
- NSK LINEAR
- NSW BELTING
- OVERLY HAUTZ
- OMNI METALCRAFT
- PACIFIC/PBC LINEAR
- PARKER
- PCI
- PEER CHAIN
- PFAFF
- POBCO
- POLY HI SOLIDUR
- PRECISION PULLEY
- P.T. INTERNATIONAL
- QM
- RADICON
- RAFFEL SYSTEMS
- RALPHS PUGH
- RAMSEY
- REGAL
- REGINA
- RENOLD
- RINGFEDER
- RINGSPANN
- ROCKFORD BALL SCREW
- ROSSI
- ROSTA



- ROTEX
- ROYERSFORD
- RULAND
- R+W
- SAGINAW
- SENQCIA
- SEW
- SHIMPO
- SIER BATH
- SOLUS
- SPARKS MOTORIZED PULLEY
- SPEED CONTROL
- STAFFORD
- STANDARD LOCKNUT
- STEELCRAFT
- STERLING
- STOBER DRIVES
- SUMITOMO
- SUPERIOR GEARBOX
- SYSTEM COMPONENTS
- SYSTEM PLAST

- TANDLER
- TB WOODS
- TEXTRON
- THOMAS SCREW CONVEYOR
- THOMSON
- TIMKEN
- TRANSCOM
- TRANTORQUE
- TRIANGLE MANUFACTURING
- TWIFLEX
- UNI CHAIN
- UNION CHAIN
- U.S. TSUBAKI
- VALU GUIDE
- VAN DER GRAAF
- VAN ZEELAND
- VON RUDEN
- W.C. BRANHAM
- WEBSTER
- WHITTET-HIGGINS
- ZERO MAX



Ø 142.50 B.C.
(5.61")

SPECIALTY MANUFACTURERS



- AMMERAAL BELTECH
- BARCO
- BI - TORQ
- BIJUR
- BOSS
- BRADFORD
- BRENNAN
- CAMBRIDGE
- COBRA SOLID LUBE
- COLSON
- CONTINENTAL
- CRC INDUSTRIES
- DAYCO HOSE
- DEUBLIN COMPANY
- DICHTOMATIK
- DIVERSIFIED PLASTICS
- DIXON
- ELES
- ENERGIZER
- FARVAL
- FRAME - WORLD
- GATES MECTROL
- GILMAN USA
- GORTITE
- HERMES
- HITACHI ENVIRONMENTAL
- IDEAL
- IGUS
- INTERNATIONAL BELLOWS

- INTERNATIONAL GAS SPRINGS
- JASON HOSE
- JERVIS WEBB
- KABEL SCHLEPP
- KEYSTONE
- KIMBALL MIDWEST
- KING TONY
- KIPP
- KLUBER
- KRYLON
- KYODO YUSHI
- LIGHT WEIGHT BELTING
- LUBRIPLATE
- LUBESITE
- MACH III
- MACHINE GUARD & COVER
- MANASTRIP
- MARTIN VIBRATION SYSTEM
- MARYLAND
- MAUDLIN
- MICROPOLY
- MOLECULOC
- NACHI ROBOTIC SYSTEMS
- ND INDUSTRIES
- NEVER - SEEZ
- PAYSON
- POSI - LOCK
- PREVOST
- RINGSPANN



- RYCO
- SCRUBS
- SIA
- SIMATECH
- SPILL TECH
- SPX
- THERMAL EDGE
- TFCO
- TRICO
- US SEAL
- UTA
- VIBRA - TITE
- VSM
- WELKER
- WISCONSIN STAMPING

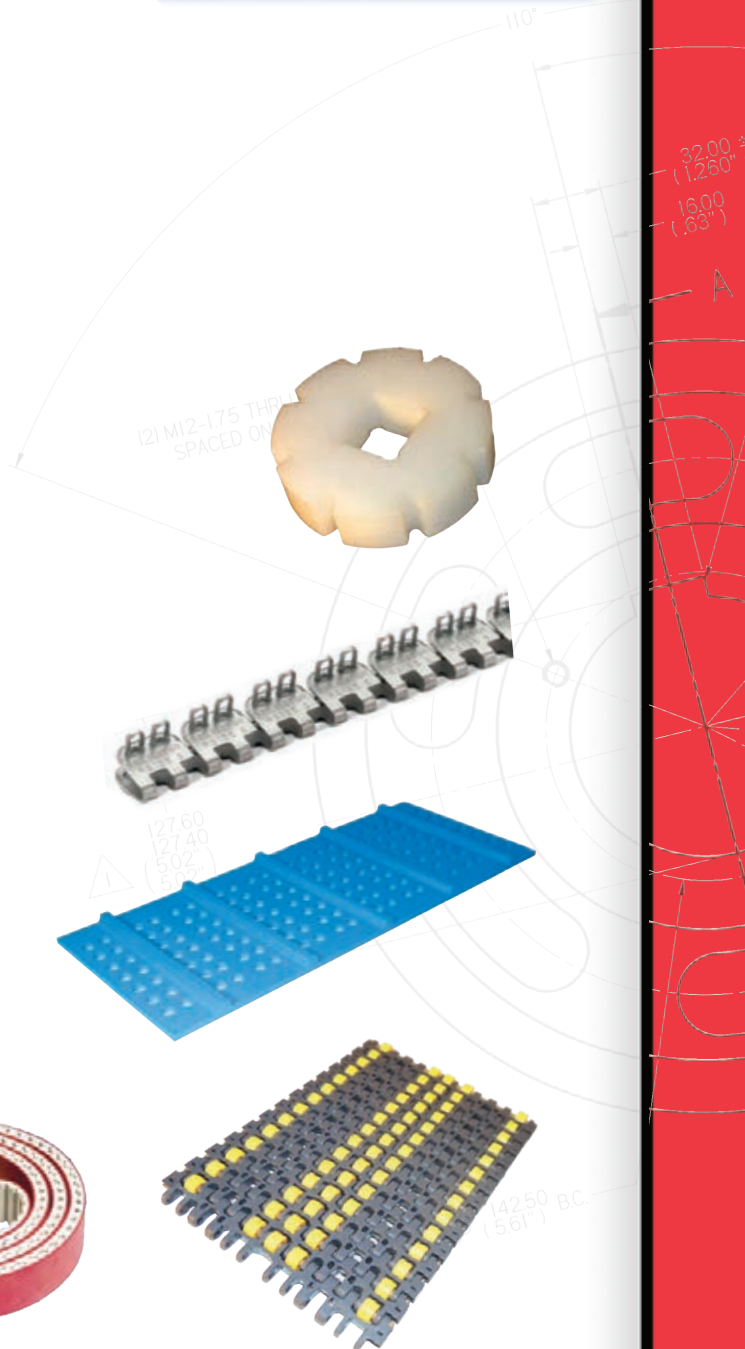
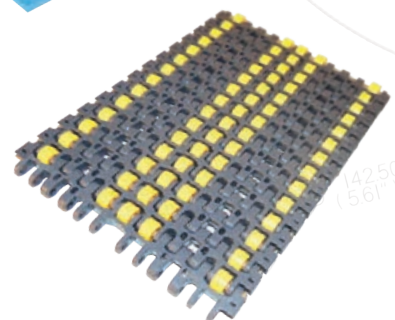
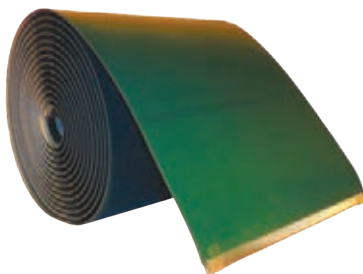
CONVEYOR BELTING

- | | |
|------------------------------------|-------------------|
| ■ ALLIGATOR | ■ ICL AMERICA |
| ■ AMMEGA | ■ JONGE POERINK |
| ■ AMMERAAL-BELTECH | ■ KEYSTONE |
| ■ APACHE | ■ LUMSDEN |
| ■ ASHWORTH | ■ MECTROL |
| ■ BRECOFLEX | ■ MOL BELTING |
| ■ CAROLINA BELTING | ■ NITTA BELTING |
| ■ DERCO | ■ NOVEX |
| ■ EAGLE | ■ RPM BELTING |
| ■ EXTREMULTUS | ■ SAMPLA |
| ■ FENNER | ■ SHINGLE BELTING |
| ■ FLEXCO | ■ SIEGLING |
| ■ FORBO | ■ TRANSILON |
| ■ GATES/MECTROL | ■ TACONIC |
| ■ GOODYEAR/VEYANCE/
CONTINENTAL | ■ TRICO |
| ■ HABASIT (HABASIT/KVP) | ■ UNI |
| ■ INTRALOX | ■ WIRE BELT |



CONVEYOR COMPONENTS

- | | |
|--------------------------|-------------------------|
| ■ ACSI | ■ NGI |
| ■ BRYANT PRODUCTS | ■ NORTH AMERICAN PULLEY |
| ■ CHANTLAND | ■ OMNI METALCRAFT |
| ■ DIVERSIFIED PLASTICS | ■ PCI |
| ■ DOUGLAS MANUFACTURING | ■ POBCO |
| ■ EFSON | ■ RALPHS PUGH |
| ■ ELESA | ■ REGAL |
| ■ ENDURA-MAX | ■ SOLUS |
| ■ FLEXCO LACING | ■ SYSTEM PLAST |
| ■ FENNER DRIVES | ■ TAPCO |
| ■ GOODMAN | ■ TITAN |
| ■ INTERROLL | ■ VALU GUIDE |
| ■ MAXI-LIFT | ■ VAN GORP |
| ■ MARTIN ENGINEERING | ■ VAN DER GRAAF |
| ■ MARTIN SPROCKET & GEAR | |



FLUID POWER MANUFACTURERS



■ ANDERSON METALS CORPORATION

■ BARCO

■ BITORQ

■ BOLTING SYSTEMS

■ BRADFORD

■ BRENNAN

■ CKD

■ CLIPPARD

■ CONTINENTAL

■ COVAL

■ DEUBLIN

■ DIXON

■ FABCO-AIR

■ FESTO

■ FITTINGS-UNLIMITED

■ GOODYEAR VEYANCE

■ HANNA

■ HUMPHREY CYLINDER

■ HYTEC

■ IDEAL HOSE CLAMPS

■ IMI NORGREN

■ JASON HOSE

■ LOVEJOY

■ MANASTRIP

■ MASTERDUCT

■ MULTI-POWER CYLINDER

■ NACHI-HYDRAULICS

■ NEW AGE INDUSTRIES

■ NEXEN

■ NOPAK

■ NORTHMAN FLUID POWER

■ PANCAKE AIR CYLINDER

■ PNEUFORCE

■ POWER TEAM

■ PREVOST

■ ROSS CONTROLS

■ SMART PRODUCTS

■ SPX FLOW

■ TOMPKINS

■ VACUFORCE

■ W.C. BRANHAM

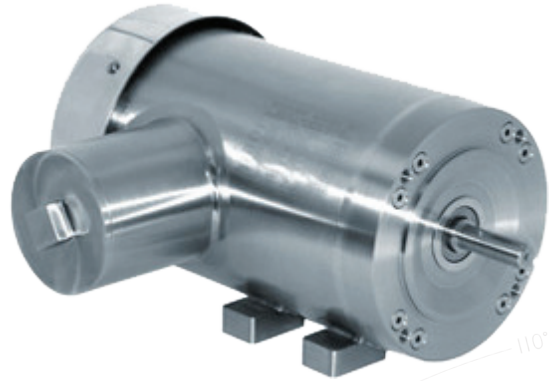
■ WINTERS INSTRUMENTS

■ YATES CYLINDERS

ELECTRICAL MANUFACTURERS

- ABB
- AC TECH
- ADVANCED CONTROLS
- AEG
- BACO
- BALDOR ELECTRIC
- BARDAC
- BENSCHAW
- BIRCHER REGLOMAT
- BISON
- BLUFFTON
- BOSTON GEAR
- BROTHER
- CEDES
- CONTRINEX
- CONTROL TECHNIQUES
- COOPER INTERCONNECT
- DART
- DELTA
- DINGS
- DYNACORP
- EE CONTROLS
- ELECTROID
- ELECTRO SENSORS
- ENCLOSURE SOLUTIONS
- EUROTHERM
- EXLAR
- FURNAS ELECTRIC
- GROSCHOPP
- HITACHI
- HTM SENSORS
- INERTIA DYNAMICS
- KEBCO
- KF GROUP

- LAFERT
- LEESON ELECTRIC
- LENZE
- LINCOLN ELECTRIC
- NORD GEAR
- NORDIC CONTROLS
- NORTH AMERICAN ELECTRIC
- ORIENTAL
- ORIX FANS
- PACIFIC SCIENTIFIC
- PINNACLE
- PIZZATO
- REES
- REER
- RELIANCE
- REULAND
- SALZER
- SCHMERSAL
- SIEMENS
- SINGULAR
- SPRECHER & SCHUH
- STAINLESS MOTORS INC
- STEARNS
- STERLING ELECTRIC
- TATUNG
- TELCO SENSORS
- THERMAL EDGE
- TOSHIBA
- TURCK
- TWIFLEX
- VACON
- VAN DER GRAAF
- WARNER
- WERMA
- WORLD WIDE ELECTRIC



BEARING MANUFACTURERS



- ACCURATE BUSHING
- AETNA BEARING
- ALINABAL
- AMERICAN SLEEVE BEARING
- AMI
- ANDREWS
- ASAHI BEARING
- BARDEN
- BERLISS
- BISHOP - WISECARVER
- BLUE BRUTE
- BOSTON GEAR
- BOWER / BCA
- BUNTING
- CARTER MANUFACTURING
- C.E. GOBEL
- CHAMPION
- CONSOLIDATED BEARINGS CO.
- COOPER BEARINGS
- CRAFT
- DU BEARING
- DUAL - VEE
- ECONOMY BUSHING
- EDT
- ELGES
- FAG BEARINGS
- FERSA
- FK BEARING

- FRANTZ BEARING
- FYH BEARING
- GENERAL BEARING
- GGB/GARLOCK
- GRAPHALLOY
- HEIM
- HEPSCO
- HIWIN
- HUB CITY
- HUDSON BEARING
- HYATT BEARING
- IDC BEARING
- IGUS
- IKO BEARING
- INA
- IPTCI
- ISOSTATIC
- JILSON
- JONES BEARING
- JTEKT
- KAYDON
- KETCHIE HOUSTON
- KOYO
- LEE CONTROLS
- LM76
- MICROPOLY/PHYMET
- MIETHER BEARING

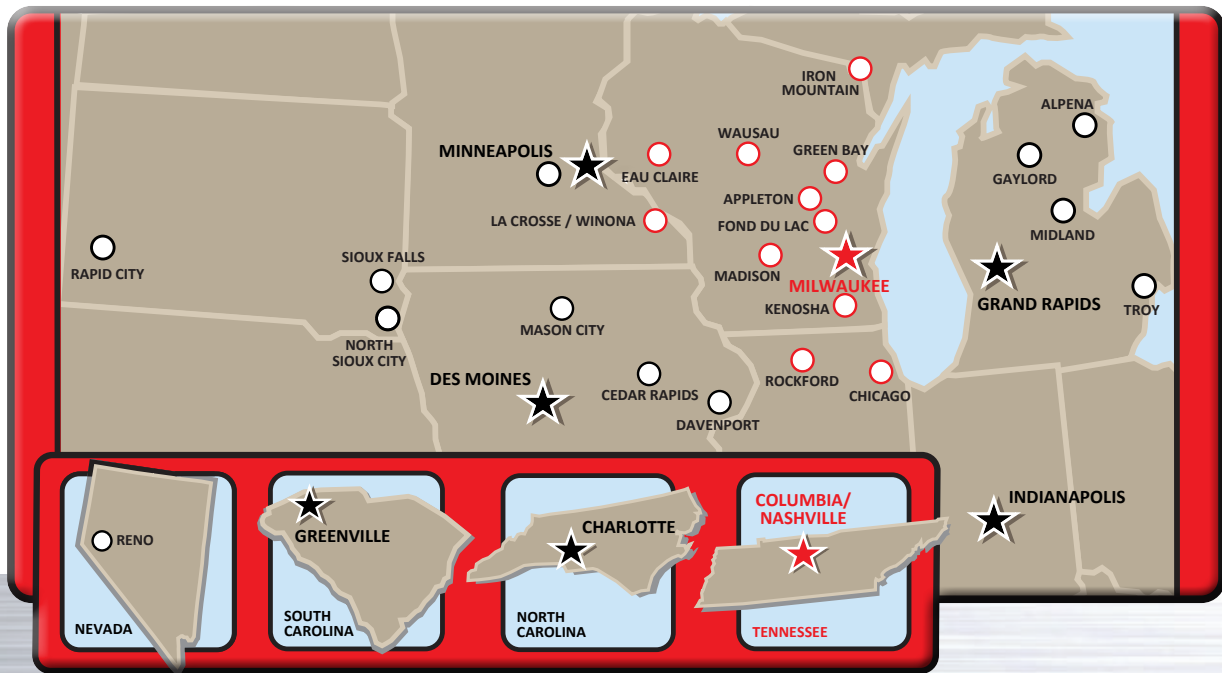


- MISUMI
- MOLINE
- MRC
- NACHI BEARING
- NATIONAL ROD END
- NB LINEAR
- NICE BEARING
- NKE
- NSK LINEAR
- NTN
- OILES
- ORS BEARING
- OSBORN
- PACIFIC BEARING
- PCI
- PEER BEARING
- POBCO
- POLYGON
- QAI
- QM BEARING
- RBC
- REGAL
- RELIABLE BRONZE
- ROLLON
- ROYERSFORD
- SNR
- SCHAEFFLER
- SCHATZ

- SCHEERER
- SILVERTHIN
- SMITH
- SOLIDUR
- SKF MOTION TECHNOLOGIES
- SOLUS
- SPADONE - ALFA
- SYSTEM PLAST
- THK
- THOMSON
- TIMKEN
- TRIANGLE
- TYSON
- UTA
- VALU GUIDE
- WOODEX
- ZKL BEARING



STOCKING LOCATIONS



1210 LOWATER RD • CHIPPEWA FALLS, WI 54729
877-285-8989 • Emergency Phone: 715-577-6373

1351 HOWARD ST • ELK GROVE VILLAGE, IL 60007
888-337-3719 • Emergency Phone: 815-871-3838

74 HALBACH COURT • FOND DU LAC, WI 54937
844-427-3486 • Emergency Phone: 920-213-8962

N112 W13131 MEQUON RD • GERMANTOWN, WI 53022
800-242-7981 • Emergency Phone: 414-303-8077

W8065 S. HWY. US 2 • IRON MOUNTAIN, MI 49801
833-650-0040 • Emergency Phone: 920-213-8962

2051 PROGRESS WAY • KAUKAUNA, WI 54130
800-346-7704 • Emergency Phone: 920-213-8962

9550 58TH PLACE • KENOSHA, WI 53144
866-927-6188 • Emergency Phone: 262-515-8003

6828 FOREST HILLS RD • LOVES PARK, IL 61111
800-397-1510 • Emergency Phone: 815-871-3838

1535 CORPORATE CENTER DR • SUN PRAIRIE, WI 53590
800-341-3090 • Emergency Phone: 608-720-9155

7203 RICKYVAL ST • WESTON, WI 54476
877-642-3391 • Emergency Phone: 715-797-8748

902 E 2ND ST • WINONA, MN 55987
877-285-8989 • Emergency Phone: 608-797-2916

ADDITIONAL STOCKING LOCATIONS IN
INDIANA, IOWA, MICHIGAN, MINNESOTA, NEVADA, SOUTH CAROLINA AND SOUTH DAKOTA

24-HOUR EMERGENCY SERVICE AND SATURDAY HOURS AVAILABLE

Contact us at 800-242-7981

sales@weimerbearing.com • www.weimerbearing.com

